

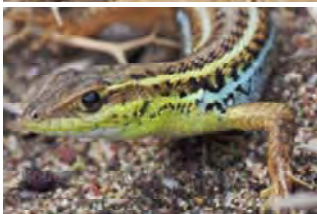


Eifel region

The Eifel region has been strongly affected by man over a long time: The so called "Langstein" is an evidence of the Neolithic megalith culture at Wallersheim. On these sites we focus on the parts of the Eifel which geologically consist of limestone (this corresponds to the area between Mechernich in North Rhine-Westphalia and Prüm in Rhineland Palladium). Our "photo album" shows a selection of the biodiversity in this area for each month of the season.



Neolithic megalith culture at Wallersheim



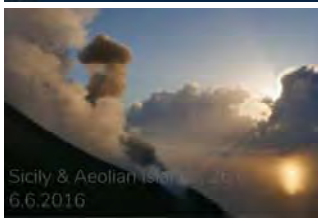
March



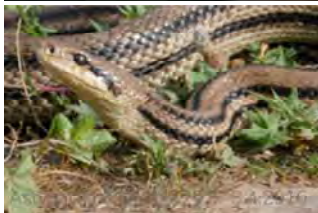
Early spring flowers: *Leucojum vernalis*



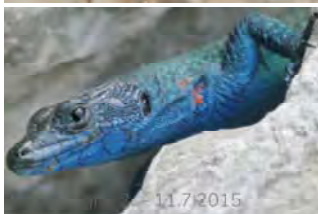
Pyrenees, 2008 - 2016



Sicily & Aeolian Islands, 2016
6.6.2016



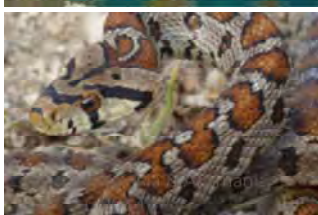
Spain, 2015 - 19.2016



11.7.2015



Spain, 29.8. - 14.9.2014



Mallorca / ...



Gagea lutea

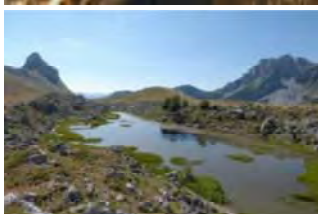
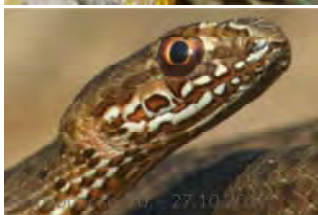
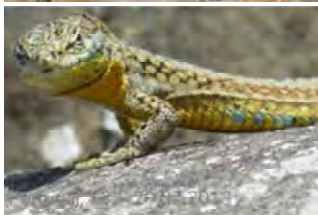


...and *Pulsatilla vulgaris*

April



Cicindela campestris



Andalucia, 10. - 18.03.2012



Libellula depressa



Spring near Wallersheim:



...the perfect time for photographing Lacerta agilis (male)



Northern Spain, 02 - 13.05



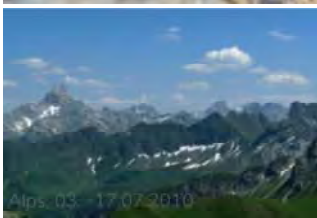
Aegean Islands, 28.05, 13.06.2011



Castellón, 01.07.2011



Central Spain, 25.09, 03.10.2010



Alps, 03 - 17.07.2010



Central Spain, 01.08.2011



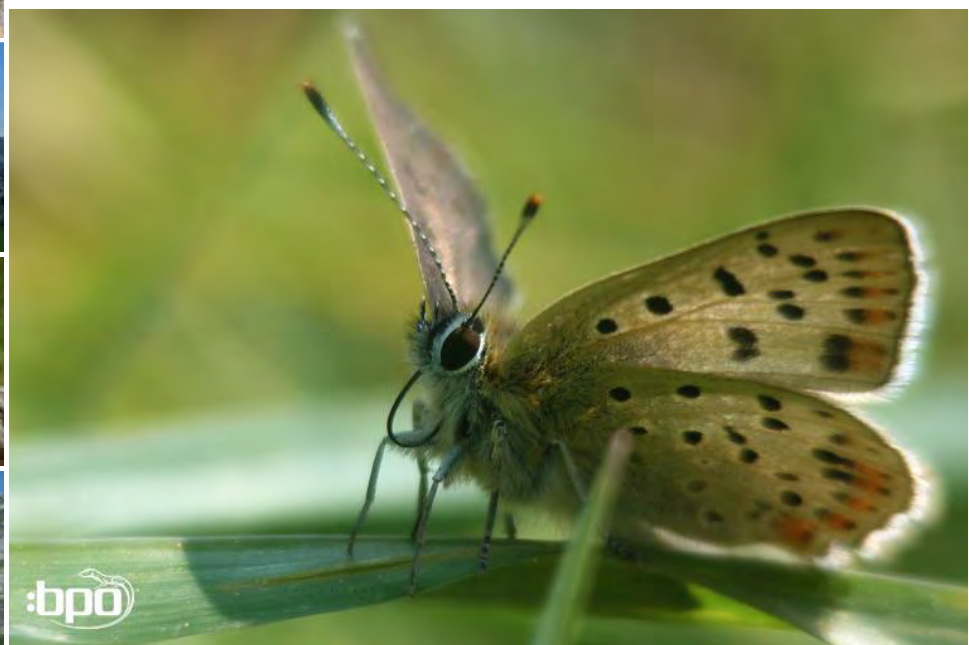
Alps, 06



Spain, November 2008 / 2009



Another male



Lycaena tityrus



Callophrys rubi



Hamearis lucina



Beech forest at Wallersheim with an interesting flora:



Corydalis solida

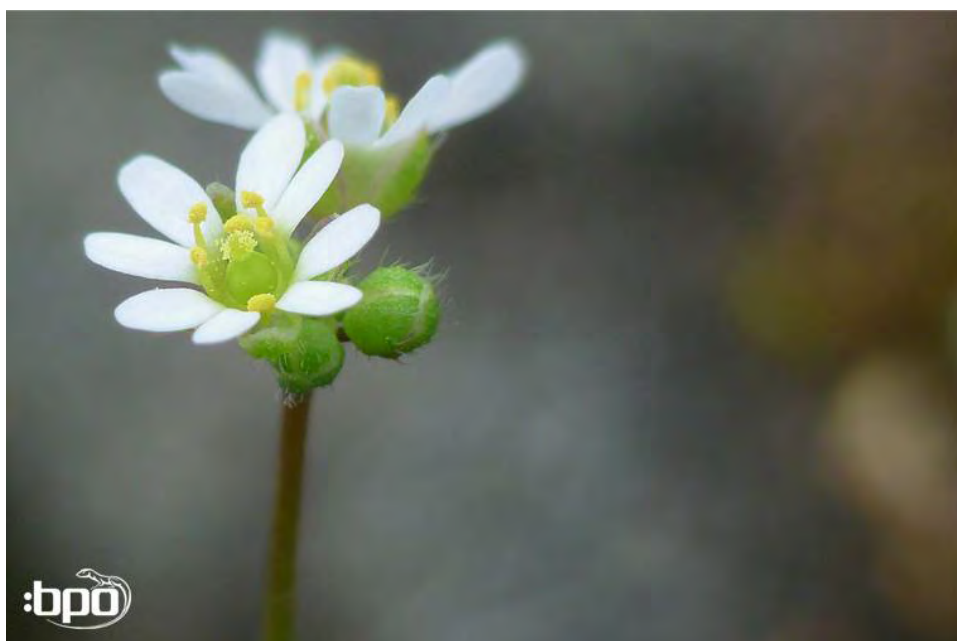


Lathraea squamaria

May



May is the most beautiful month in the Eifel hills!



A masterpiece of minimalism: Erophila verna



Saxifraga granulata



Saturnia pavonia



Carcharodus alceae



Pseudopanthera macularia



Siona lineata



Tyria jacobaeae



Carterocephalus palaemon



Polyommatus icarus



Melitaea cinxia



Carabus coriaceus



Aquilegia vulgaris



Antennaria dioica



An atavistic *Platanthera chlorantha*



Dactylorhiza majalis and *Dactylorhiza maculata*



A hybrid of *Ophrys insectifera* and *O. holoserica*



Matrix natrix helvetica, Rheinland-Pfalz



Landscape at Gerolstein

June



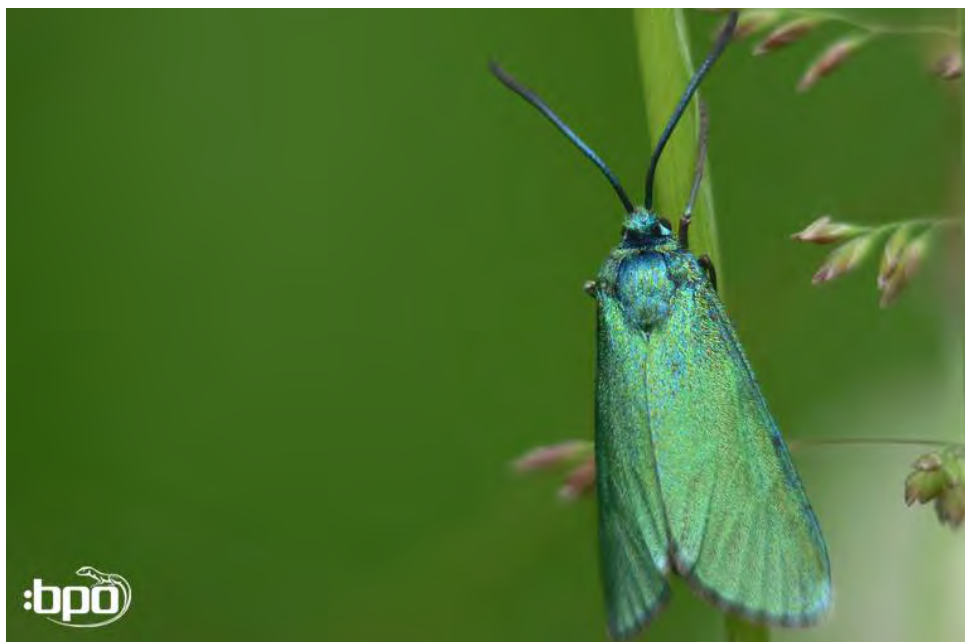
Female Lacerta agilis



Zootoca vivipara



Diacrisia sannio



Adscita statices



Zygaena loti



Maculinea arion



Plebeius argus



:bpo
Albinotic Orchis ustulata



:bpo
Ophrys insectifera



:bpo
Melampyrum cristatum



Left: *Melampyrum arvense*; right: *Orobanche elatior*



Orobanche teucris



Dolycoris baccarum ovipositing

July



In summer, newts can be found far away from water: *Lissotriton helveticus*



Ichthyosaura alpestris



Rana temporaria



Dark clouds in summer



Zootoca vivipara



Juvenile Zootoca vivipara



Teucrium montanum: a rare plant in the Eifel area



Perfectly designed Stachys recta



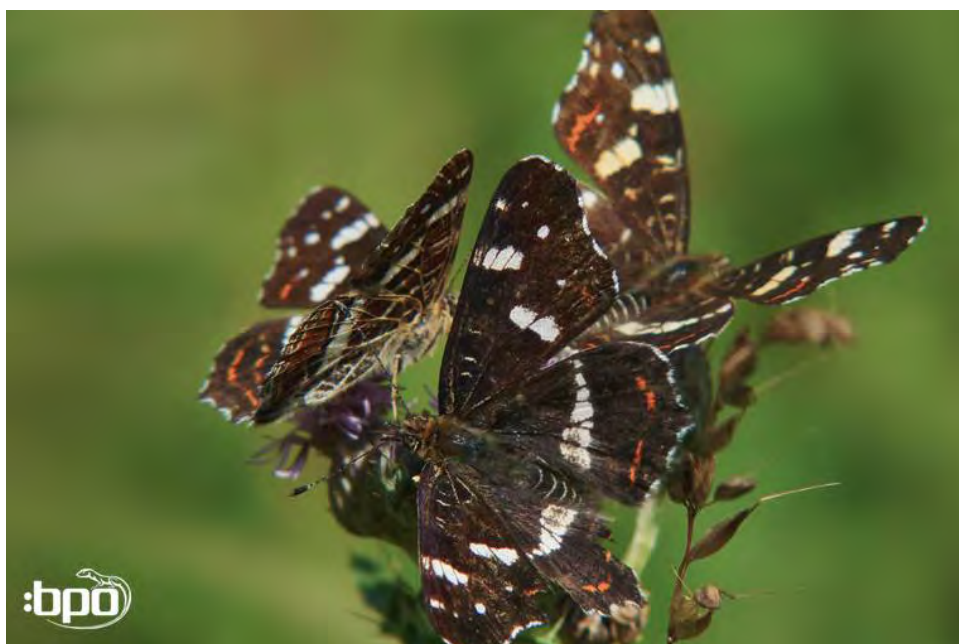
Allium oleraceum



Abraxas grossulariata



Pyronia tithonus



Araschnia levana



Coronella austriaca



Coronella austriaca (about to shed its skin)



Coronella austriaca



Male *Lacerta agilis* – with pale colouration in late summer



Female *Lacerta agilis*



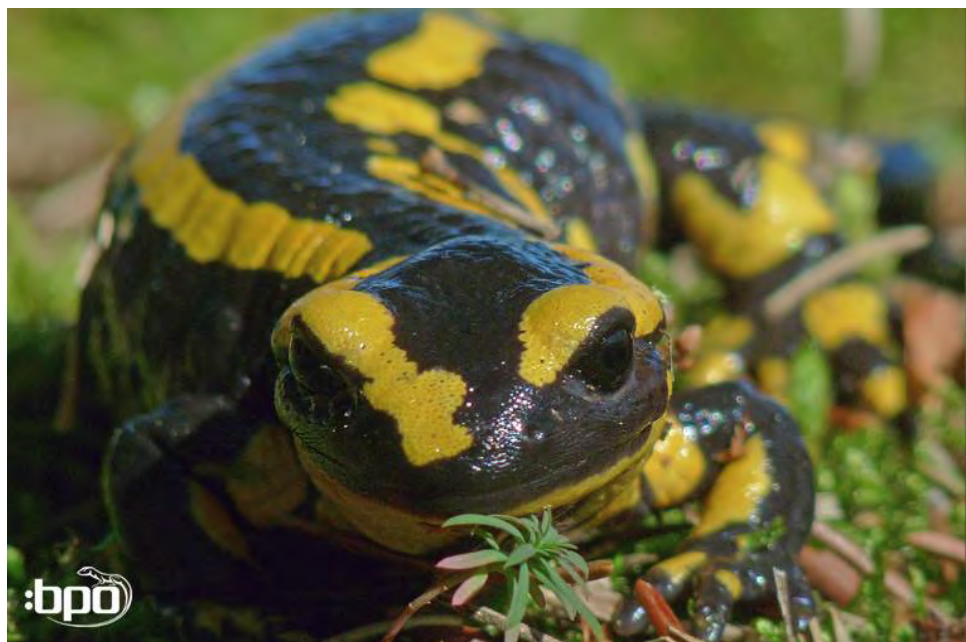
Anguis fragilis



In late summer, amphibians still can be found: Alytes obstetricans



Bufo bufo



Salamandra salamandra



Polyommatus semiargus



Gonepteryx rhamni



Looks like a surreal sculpture: *Parnassia palustris*



It is hard to believe that such a diminutive flower is big enough for a fly: *Acinos arvensis* with *Melanostoma mellinum*



The last orchid of the season: *Epipactis purpurata*

September



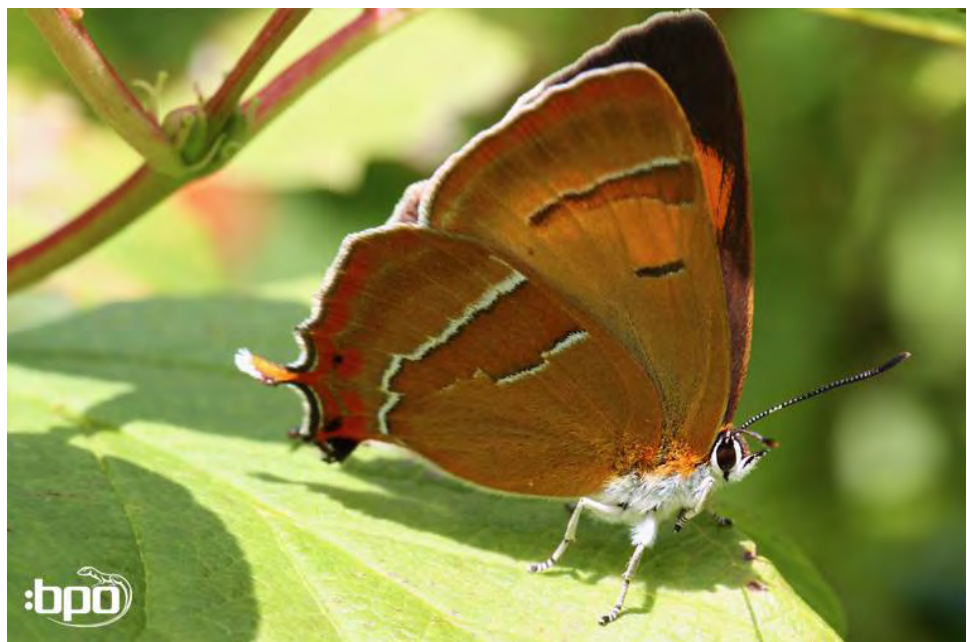
Carpocoris purpureipennis



Eurygaster maura und Palomena prasina



Papilio machaon



Autumn butterfly: Thecla betulae



Gentianella ciliata



Gentianella germanica



Winter at the celto-roman temple in Nettersheim